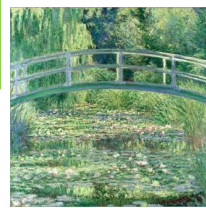




# What's happening in Year Four?



During this half term we will be exploring the exciting theme  
**Where in the world are we?**

During English lessons, we will be looking at extracts from fantasy stories. We will be reading the abridged version of *The Lion, the Witch and the Wardrobe* and exploring the features of a fantasy story. We will then be looking at some poetry where the children will be writing to entertain the reader.

In French we shall be learning all about things in the classroom. We will be seeing if the children can use this in everyday life.

In Maths we will focus on: coordinates and fractions that are greater than one. In the lessons, we will be adding and subtracting fractions. We will also be spending a lot of time working on the children's fluency of their times tables.



As part of our Art and Design, we will investigate the work of different European artists and attempt to represent their individual styles.

Please remember to help your child with learning their multiplication tables. By the end of Year 4, children are expected to know all their times tables.

In Geography the children will be learning how to use maps to locate Great Britain and the countries that make up the UK. They will be learning about the different countries in Europe as well the different geographical features of our continent and its' location within the wider world.

In Science the children will be learning about animals including humans, the digestive system, our teeth and food chains. This will include an exciting workshop about digestion.

We ask that you support your child by continuing to hear them read each day at home and ask them questions about what they have read to ensure they have understood. Thank you!



In PSHE children shall be developing their understanding of community and its positive impact upon society. They shall also reflect on decision making around money and how best to keep it safe.

Just a quick note to say thank you for all your hard work supporting your child in school. Your family and child are very important to us and we always want to work in partnership with you.

The children will continue to have PE and forest school every Thursday so please remember to ensure kit comes into school each Monday for the week ahead. Please provide them with the correct school PE kit (red t-shirt and black shorts; tracksuits can be worn in colder weather). Please ensure it is **ALL NAMED** clearly. Also, a reminder to send in a pair of labelled wellington boots to leave in school.

Important Days

P.E: Thursday



**THANK YOU!**